

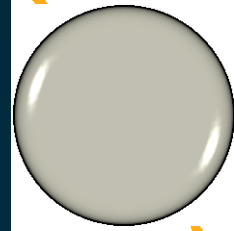
Rising Freshman Parent Night

2012-2013 School Year

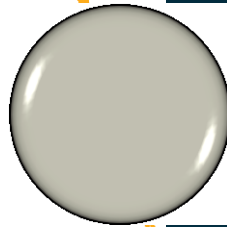
Agenda

Power Point will be
posted on counseling
website:

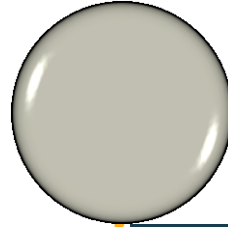
[www.mycentennial
counseling.com](http://www.mycentennialcounseling.com)



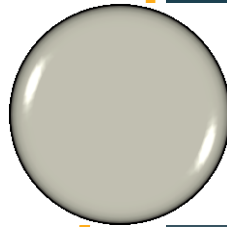
Kibbey Crumbley, Principal



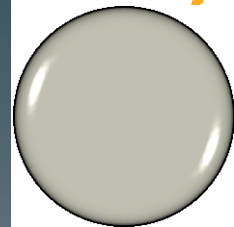
Karen LeCates, PTSA Co-President



Jennifer Cassidy, Curriculum AP



Melissa Freeman, Counselor



Janet Siwy, TAG Contact

Centennial High School PTSA

PTSA Overview

- Benefits
- Opportunities
- How to get involved

Home Access Center

- What is it?
- Benefits
- How do you access it?

Recommendations

- Remain involved
- Check HAC regularly
- Encourage advocacy
- Stay connected

Communication

- PTSA website
www.centptsa.org
- Email blasts
- Knightly News

Curriculum FAQs

**Grading Policies and
Expectations**

**Credits and Graduation
Requirements**

**Choosing Courses for 2013-2014
School Year**



Graduation Requirements

Students must earn a total of 23 credits:

- 4 English
- 4 Mathematics
- 4 Science
- 3 Social Studies
- 1 Health/Physical Education
- 3 CTAE and/or World Language and/or Fine Arts
- 4 additional elective units



- Specific graduation requirements can be found on www.mycentennialcounseling.com
- Counselors will conduct classroom guidance lessons and supplementary parent nights to support students in meeting these requirements.

Earning Credits



Students earn credit for a course by earning a passing grade (70 or higher) in the course.



Grading Scale:

• A	=	90 or higher
• B	=	80-89
• C	=	70-79
• F	=	69 or below



Grade Level Placement:

Freshmen	=	Less than 5 credits
Sophomore	=	5 – 10.5 credits
Junior	=	11 – 16.5 credits
• Senior	=	17 or more credits

General Grading Policies

Interim progress reports will be issued to students every 6 weeks

Report cards are issued at the end of S1 and S2; these final grades are reflected on the high school transcript

Each course semester is independent of the other; S1 and S2 course grades are NOT averaged

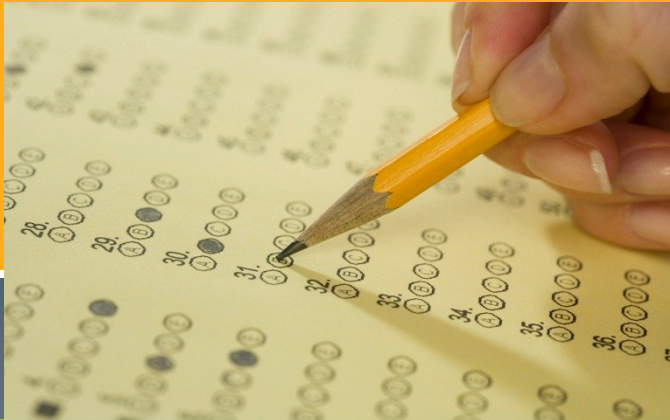
Honors and AP courses receive an additional 7 points added to the final passing grade

Parents can use Home Access Center (HAC) to track assignments, grades, attendance, discipline, etc. during the semester

Final Exams and End-of-Course Tests

EOCT courses:

- **Biology***
- **Physical Science**
- **9th Lit/Comp***
- **11th Lit/Comp**
- **CCGPS Coord. Algebra***
- **GPS Geometry**
- **US History**
- **Economics**



- The EOCT is weighted at 20% of a student's final course grade (S2)
- Most teachers will weight the S1 final the same as the EOCT
- 9th grade courses are marked with an *
- Final exams are given in all other courses – see teacher syllabi for details

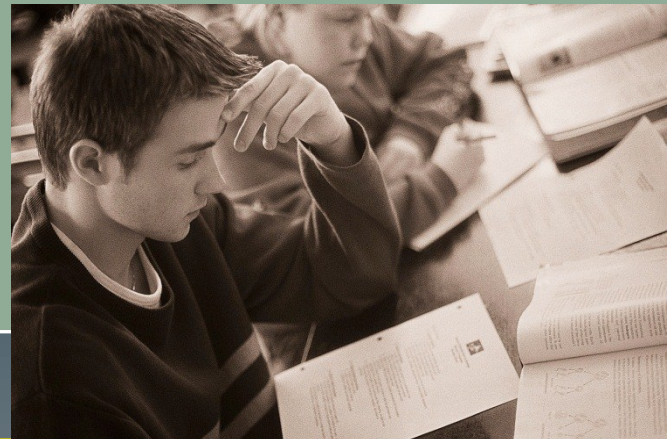
Parent Concerns

Questions about student grades, assignments, course content, classroom consequences, etc. should be directed to the teacher first.

The counselor can be contacted for support in scheduling meetings with all teachers or general academic support.

Administrators are available for academic support after contact has been initiated with the teacher.

- | | |
|--------------------|--------|
| • Hershel Bennett | A-D |
| • Keynun Campbell | E – Le |
| • Jennifer Cassidy | Li – R |
| • David Mashburn | S-Z |



Course Selection and Changes

- Teachers will recommend students for academic placement during the spring semester
- Parents/Students will be given the opportunity to review recommended placements; questions should be directed to the teacher and/or counselor prior to enrollment in the course
- Students will be given opportunities to select elective courses; changes may be made within the designated enrollment period. After the verification period, students are expected to complete courses in which they enroll
- Changes after the verification period will be rare and will require administrative approval


Centennial Freshmen Elective Choices (2013-2014 School Year)

Rank your elective choices from 1 - 7 (1 being the course you are most interested in taking). You will find the course descriptions in your Curriculum Handbook located at www.chsknights.com under "Quick Links." Enrollment in each course is limited, and we will honor as many requests as possible. If you do not list five choices, and we cannot honor your other requests, we will select an elective for you. Any course(s) on this form may be used to complete a ninth grade student schedule.

World Languages: *All world language classes are yearlong classes; Can count towards the 3 Pathway credits; Students planning to enter or transfer into a University of Georgia institution or other post-secondary university or college must take at least two units of the same world language, preferably three units of the same language. *Honors courses require teacher recommendation.*

COURSE #	COURSE NAME	COURSE LENGTH	PRE-REQUISITE	RANK
60.0110000	French 1	yearlong		
60.0120000	French 2	yearlong	yes	
60.0120040	French 2 Honors*	yearlong	yes	
60.0710000	Spanish 1	yearlong		
60.0720000	Spanish 2	yearlong	yes	
60.0720040	Spanish 2 Honors*	yearlong	yes	
61.0110000	German 1	yearlong		
61.0120000	German 2	yearlong	yes	
61.0120040	German 2 Honors*	yearlong	yes	

CTAE (Career Technology & Agriculture Education): *All CTAE classes are yearlong classes; Can count towards the 3 required Pathway credits*

COURSE #	COURSE NAME	COURSE LENGTH	PRE-REQUISITE	RANK
10.4111000	 Broadcast Video Production 1	yearlong		
11.4130000	Computing in the Modern World	yearlong		
25.4210000	Introduction to Healthcare Sciences	yearlong		
21.4250000	Foundations of Engineering	yearlong		
20.4010100	Family & Consumer Science	yearlong		
43.4300000	Introduction to Law & Justice	yearlong		
28.0310000	JROTC/Army 1	yearlong		

Performing Arts: *All performing arts classes are yearlong classes; Can count towards the 3 required Pathway credits*

Verification of Courses

THIS IS NOT YOUR FINAL SCHEDULE. Your current teachers have recommended you for the above academic courses for next year. These recommendations, coupled with the electives you select, will be used to construct your schedule for next year. Please ensure that you have a total of **6.0 credits**. If you would like to drop/change a class listed above, **please mark a straight line through the course.** You may only drop elective course(s). **Please write the name of the elective course you want instead of the one you wish to add/drop.** You must make sure that you have **6.0 credits**. Adjustments to academic courses will be made based on final grades in May.

To drop Math Support, your parent must request this change in writing and attach the request to this form (see your counselor for a form). Please be advised that if you are recommended for math support, you are strongly encouraged to keep this course in your schedule.

ELECTIVE CHOICES: Enrollment in elective choices is subject to change. Space and staffing limitations may affect your priority choices listed above. Every effort is made to place students in their first elective choices, however, it may be necessary to place students in the other elective choices previously provided. **The changes may be made prior to the start of the 2013-14 school year without notification.**

You may not add honors courses to the list above, but you may drop down to on-level by writing "on-level" beside the course. To add an honors course, you may request a waiver from your counselor.

Parent Signature: _____ Student Signature: _____ Date: _____

Please return this form to your middle school counselor by _____

2012-13 Counseling Dept Staff



**Michael
Absher
A – Dam**



**Shellie
Caplinger
Dan – Hou**



**Patrick Cox
Hov - Mord**

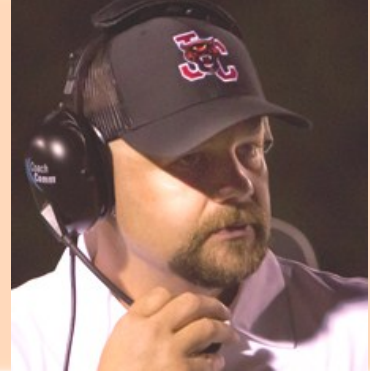
2012-13 Counseling Dept Staff



**Melissa
Freeman
More – Seo**



**Hella Peart
Sep – Z**



**Billy Kirk
Graduation
Coach**

CHS Counseling Curriculum

9th Grade

- Counseling Services; Goal Setting
- Academic Success Skills
- 4 Year Academic Plan
- Signs of Suicide
- Fall and Spring Parent Nights

10th Grade

- Career Exploration; Online Resources
- Cyber-Safety
- Spring Parent Night

11th Grade

- College Admissions Criteria
- College Search Process
- Junior Advisement
- Fall Parent Night

12th Grade

- College Application Process
- Georgia Apply to College Day
- Fall Parent Night
- Financial Aid Night

Student Support Programs

Grades 9 - 12



Counseling Program Resources

Counseling Website

www.mycentennialcounseling.com

College Representative Visits

Scholarship Information Blasts

Credit Recovery Options

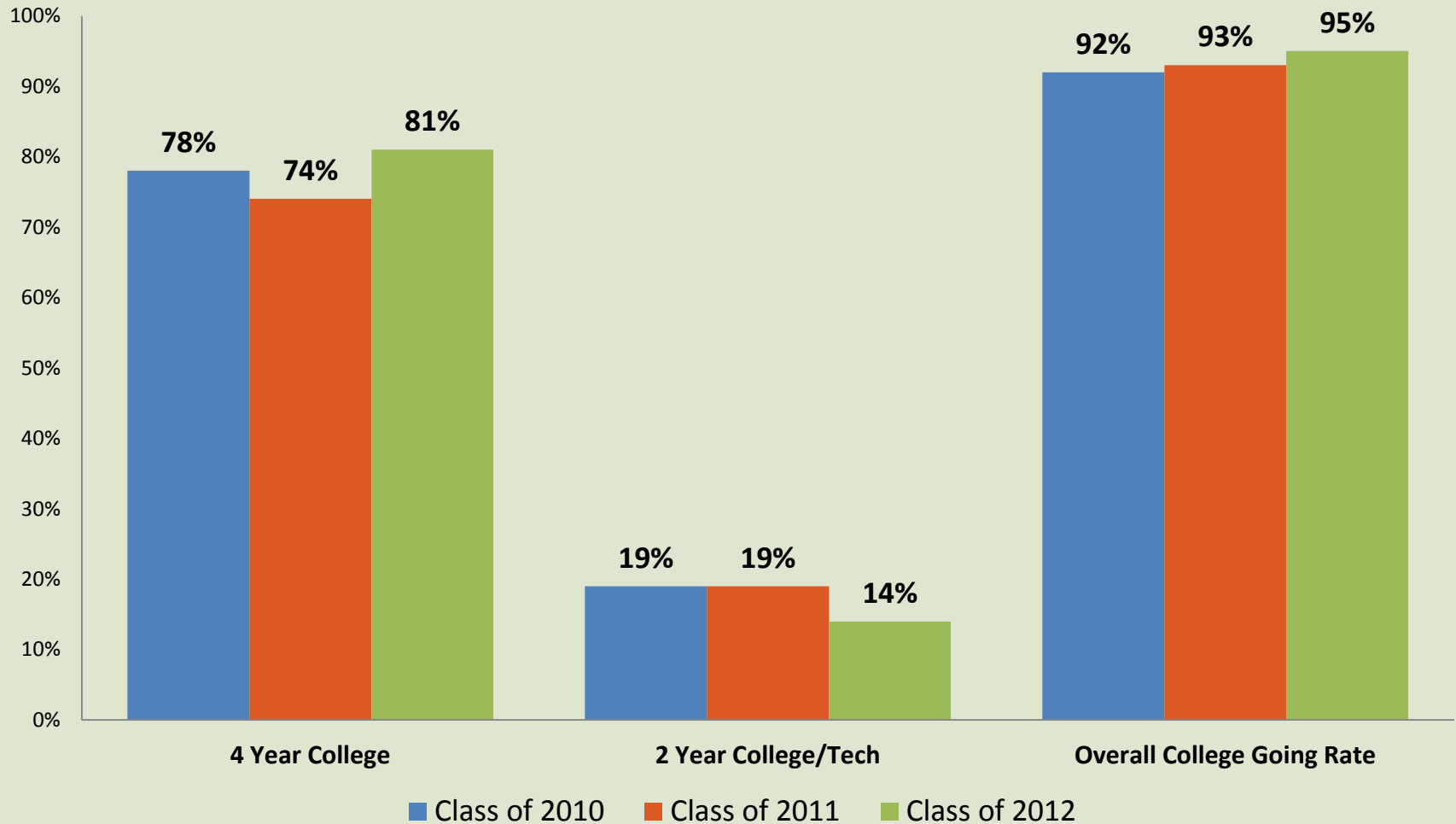
Parent Nights

SAT/ACT Test-Prep Opportunities

Consultations & Collaboration

2011-12 Results Data

- **2% increase** in Centennial's overall college going rate (93% to 95%)
- **7% increase** in the Centennial's 4 year college going rate (74% to 81%)



Important Websites

Centennial High School website:

www.chsknights.org

Counseling website:

www.mycentennialcounseling.com

PTSA website:

www.centptsa.org

Athletics website:

<http://school.fultonschools.org/hs/centennial/Pages/Athletics.aspx>

Foundation for the Fine Arts website:

<http://www.chsffa.org/>

Moving Forward



Power Point is posted on
www.mycentennialcounseling.com

Meet all deadlines set by middle school teachers
and counselors

Rising Freshman Enrollment (Non-Feeder): Thursday, April 18 and
Thursday, April 25. You may pick up enrollment paperwork
ahead of time. Please bring "Teacher Recommendation" form.

Check website for information regarding the
summer "Knights Camp" and Orientation

Please complete and return the feedback form.

CHS TAG Department

TAG Teachers:

Larken McCord,
Meggin Rosner, Janet
Siwy, and Jessica
Taylor

TAG Freshmen are
assigned an
advisement with one
of the TAG teachers

TAG freshmen are
served during 1st
semester through the
2nd period seminar
that meets M, W, F

Questions?