

# Rising Freshman Parent Night

2014-2015 School Year

# Agenda

Power Point will be  
posted on counseling  
website:

[www.mycentennial  
counseling.com](http://www.mycentennialcounseling.com)



CHS Administrative Welcome

Lisa Martin, Co-PTSA President

Anne Davis, School Counselor

# Centennial High School PTSA

## PTSA Overview

- Benefits
- Opportunities
- How to get involved

## Home Access Center

- What is it?
- Benefits
- How do you access it?

## Recommendations

- Remain involved
- Check HAC regularly
- Encourage advocacy
- Stay connected

## Communication

- PTSA website  
[www.centptsa.org](http://www.centptsa.org)
- Email blasts
- Knightly News

# **Welcome to Centennial High School**

Holcomb Bridge Middle School

Haynes Bridge Middle School

Private Schools

Home Schools

Fulton County Non-Feeder Schools

Non-Fulton County Public Schools

Questions and Feedback Form

# Curriculum FAQs

**Credits and Graduation  
Requirements**

**Grading Policies and  
Expectations**

**Choosing Courses for 2015-2016  
School Year**



# Graduation Requirements

Students must earn a total of 23 credits:

- 4 English
- 4 Mathematics
- 4 Science
- 3 Social Studies
- 1 Health/Physical Education
- 3 CTAE and/or World Language and/or Fine Arts
- 4 additional elective units



- Specific graduation requirements can be found on [www.mycentennialcounseling.com](http://www.mycentennialcounseling.com)
- Counselors will conduct classroom guidance lessons and supplementary parent nights to support students in meeting these requirements.

# Earning Credits



Students earn credit for a course by earning a passing grade (70 or higher) in the course.



## **Grading Scale:**

- A = 90 or higher
- B = 80-89
- C = 70-79
- F = 69 or below



## **Grade Level Placement:**

- Freshmen = Less than 5 credits
- Sophomore = 5 – 10.5 credits
- Junior = 11 – 16.5 credits
- Senior = 17 or more credits

# General Grading Policies

Interim progress reports will be issued to students every 6 weeks

Report cards are issued at the end of S1 and S2; these final grades are reflected on the high school transcript

Each course semester is independent of the other; S1 and S2 course grades are NOT averaged

Honors and AP courses receive an additional 7 points added to the final passing grade

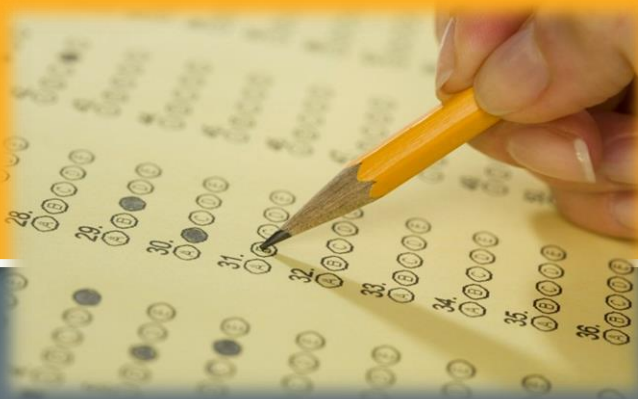
Parents can use Home Access Center (HAC) to track assignments, grades, attendance, discipline, etc. during the semester



# Final Exams and End-of-Course Assessments

## EOC courses:

- **Biology\***
- **Physical Science**
- **9<sup>th</sup> Lit/Comp\***
- **11<sup>th</sup> Lit/Comp**
- **CCGPS Coord. Algebra\***
- **CCGPS Geometry**
- **US History**
- **Economics**



- The EOC is weighted at 20% of a student's final course grade (S2)
- Most teachers will weight the S1 final the same as the EOC
- 9<sup>th</sup> grade courses are marked with an \*
- Final exams are given in all other courses – see teacher syllabi for details

# Parent Concerns

Questions about student grades, assignments, course content, classroom consequences, etc. should be directed to the teacher first.

The counselor can be contacted for support in scheduling meetings with all teachers or general academic support.

Administrators are available for academic support after contact has been initiated with the teacher.

- Caroline Miley
- Damian Bounds
- Priscilla Cole
- Olga Glymph
- Lonna Upton
- Billy Kirk

A - Dio

Dip - Lam

Lan - Ri

Ro - Z

Administrative Assistant

Administrative Assistant/Athletic Director

# Course Selection and Changes

- Teachers will recommend students for academic placement during the spring semester
- Parents/Students will be given the opportunity to review recommended placements; questions should be directed to the teacher and/or counselor prior to enrollment in the course
- Students will be given opportunities to select elective courses; changes may be made within the designated enrollment period. After the verification period, students are expected to complete courses in which they enroll
- Changes after the verification period will be rare and will require administrative approval

## Centennial High School

### Rising 9<sup>th</sup> grade ELECTIVE Course Registration for School Year 2015-2016

Visit Centennial High School's website for course descriptions: <http://school.fultonschools.org/hs/centennial>

Student Name: \_\_\_\_\_ (Legal First Name) Middle School: ☐ Holcomb Bridge ☐ Haynes Bridge ☐ Other \_\_\_\_\_  
 \_\_\_\_\_ (Legal Last Name)

**Choose the electives you are wanting; rank them 1-4.** Place a "1" by your top choice, "2" by your 2<sup>nd</sup> choice, "3" by your third choice, and "4" by your fourth choice.

Be careful when ranking; if you choose a SEMESTER class as a choice, you need to choose another SEMESTER class to go with it.  
 1 semester class + 1 semester class = Yearlong credit.

#### Example #1:

- 1 Intro to Art
- 1 Draw/Painting
- 2 Band
- 3 JROTC
- 4 General PE
- 4 Weight Training

#### Example #2:

- 1 Band
- 2 JROTC
- 3 Law & Justice
- 4 Acting I

#### Example #3:

- 1 Intro to Art
- 1 Draw/Painting
- 2 Beg. Guitar 1
- 2 Beg. Guitar 2
- 3 Health Science
- 4 JROTC

#### SEMESTER ELECTIVES = 1/2 (0.5) credit

RANK	Course Name	Course #
FINE ARTS COURSES		
Can count towards the 3 Pathway credits.		

#### YEAR-LONG ELECTIVES = 1 credit

RANK	Course Name	Course #
FINE ARTS COURSES		
Can count towards the 3 Pathway credits.		

# Sample 9<sup>th</sup> Grade Schedule

Semester 1	Semester 2
9 <sup>th</sup> Grade Literature	9 <sup>th</sup> Grade Literature
CCGPS Coordinate Algebra	CCGPS Coordinate Algebra
Biology	Biology
General Health	Personal Fitness
Elective	Elective
Elective	Elective

# 2014-15 Counseling Dept Staff



**Michael  
Absher  
A – Ct**



**Shellie  
Caplinger  
Cu - G**



**Anne Davis  
H - McG**

# 2013-14 Counseling Dept Staff



**Melissa  
Freeman  
Mch - Sanc**



**Hella Peart  
Sand - Z**



**Maria Jiram  
Graduation  
Coach**

# CHS Counseling Curriculum

## 9<sup>th</sup> Grade

- Counseling Services; Goal Setting
- Academic Success Skills
- 4 Year Academic Plan
- Signs of Suicide
- Fall and Spring Parent Nights

## 10<sup>th</sup> Grade

- Career Exploration; Online Resource
- Dual Enrollment
- PSAT Score Review
- Spring Parent Night

## 11<sup>th</sup> Grade

- College Admissions Criteria
- College Search Process
- Junior Advisement
- Fall Parent Night

## 12<sup>th</sup> Grade

- College Application Process
- Georgia Apply to College Day
- Fall Parent Night
- Financial Aid Night



# Student Support Programs

Grades 9 - 12



New Student Group

AP Access Group

Bridge Law Benchmark Activities

Classroom Guidance

Individual Academic and Social/Emotional  
Guidance

# Counseling Program Resources

**Counseling Website**

[www.mycentennialcounseling.com](http://www.mycentennialcounseling.com)

**College Representative Visits**

**Scholarship Information Blasts**

**Credit Recovery Options**

**Parent Nights**

**SAT/ACT Test-Prep Opportunities**

**Consultations & Collaboration**

## Important Websites

**Centennial High School website:**

[www.chsknights.org](http://www.chsknights.org)

**Counseling website:**

[www.mycentennialcounseling.com](http://www.mycentennialcounseling.com)

**PTSA website:**

[www.centptsa.org](http://www.centptsa.org)

**Athletics website:**

<http://school.fultonschools.org/hs/centennial/Pages/Athletics.aspx>

**Foundation for the Fine Arts website:**

<http://www.chsffa.org/>

# Moving Forward



Power Point is posted on  
[www.mycentennialcounseling.com](http://www.mycentennialcounseling.com)

Rising Freshman Enrollment (Non-Feeder): Thursday, April 16 and Thursday, April 23. You may pick up enrollment paperwork ahead of time. Please bring "Teacher Recommendation" form.

Check website for information regarding the summer "Knights Camp" and Orientation

*Please complete and return the feedback form.*

**Talented and Gifted [siwyj@fultonschools.org](mailto:siwyj@fultonschools.org)**

**Special Education [buckner@fultonschools.org](mailto:buckner@fultonschools.org)**

Becky Hostler, AP Human Geography overview