

CENTENNIAL HIGH SCHOOL

DUAL ENROLLMENT INFORMATION SESSION

NOVEMBER 8, 2017

6:00 PM-7:00 PM



AGENDA

- 6:00 CHS WELCOME & DUAL ENROLLMENT OVERVIEW**
- 6:05 GWINNETT TECHNICAL COLLEGE PRESENTATION**
- 6:30 GEORGIA STATE UNIVERSITY-PERIMETER PRESENTATION**
- 6:55 CLOSING W/Q & A**



WHAT IS DUAL ENROLLMENT?

The **DUAL ENROLLMENT** program is an opportunity for qualified high school students to simultaneously earn college and high school credit while enrolled at Centennial High School as a high school student.

Students may participate as a full-time or part-time student.

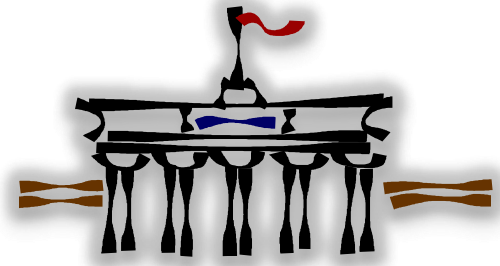
Students earn college credits while meeting high school graduation requirements.

WHO CAN PARTICIPATE?



- **9th-12th grade students are eligible to participate; however, colleges may have age/grade requirements as part of their admissions policy.**
- **GWINNETT TECHNICAL COLLEGE will accept 9th-12th grade students.**
- **GEORGIA STATE-PERIMETER COLLEGE will accept 11th-12th grade students.**

HOW DO I PARTICIPATE?



Student may apply to attend any participating public college, private college, or technical college in Georgia. Students; however, must consider access to the college when selecting their DE institution.

PROCESS:

- Student/Parent must complete the Fulton County DE contract**
- Student must take the necessary exam (SAT/ACT/ACCUPLACER) for DE participation**
- Student must apply & be accepted into the DE program of choice**
- Student must submit a Student Participation Agreement (SPA) form**
- Student must register for their DE courses**
- Student must complete the GAFutures.org Funding Application**

UPON HIGH SCHOOL GRADUATION, HOW WILL MY POST-SECONDARY INSTITUTION USE MY DUAL ENROLLMENT CREDITS?

Colleges/Universities decide, independently, how they will use dual enrollment credits. Credits may fulfill collegiate core/major course requirements or elective course requirements. It is the responsibility of the student/family to review the dual enrollment policy of their college(s) of interest.



HOW DOES GRADING WORK?

✓ If colleges provide the high school with letter grades, Centennial will transcribe the letter grade to a numeric grade in accordance with District Board Policy IH, VII:

A = 95

B = 85

C = 75

D = 70 (IF CREDIT BEARING)

F = 60

- ✓ If the student fails a class, it could jeopardize graduation! The failing grade is reported to both the college & high school transcript
- ✓ 7 points are added to the final grade
- ✓ All dual enrollment classes are included on both the high school & college transcript.

CREDIT CONVERSION

- ▶ 1 - 2 semester hour college classes = .5 HS credit.
- ▶ 3 - 5 semester hour college classes = 1.0 HS credit.

***Science labs will receive .5 HS credit and will count toward elective credit. They will not count towards the fourth science requirement. ***



GWINNETT
TECHNICAL COLLEGE

ALPHARETTA-NORTH FULTON CAMPUS

**Leah Miles – Dual Enrollment Coordinator
Alpharetta-North Fulton Campus**



What is Dual Enrollment?

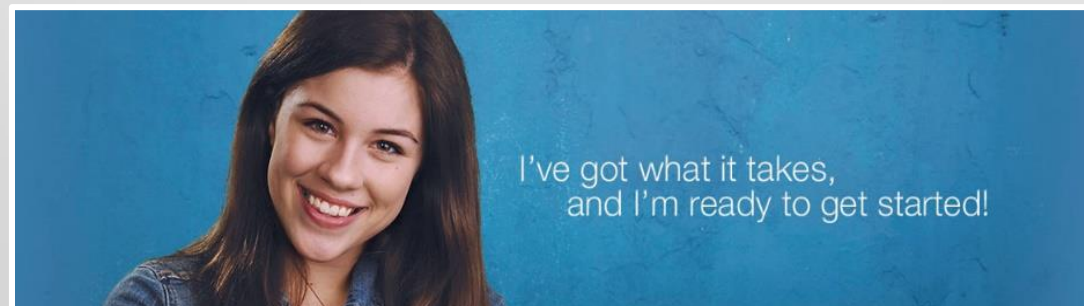
Coursework completed at GTC can transfer as high school credits.



- One class, DUAL credit!! Students can take classes at GTC and the grade/credits earned can be transferred back to the high school.
- Save HOPE credits! Courses taken under Dual Enrollment **Do NOT** count against the maximum hourly caps for HOPE scholarships or grants.
- Flex your schedule! You can participate in Dual Enrollment and choose convenient times for on-campus or **online** classes. **Including Summer semester.**
- **One semester** of a GTC course counts as **a full year** of a high school course.
- Save money! Tuition, mandatory fees and books are fully covered for DE students.
Can someone say, "NO Tuition"!!

Dual Enrollment Eligibility

- Students enrolled in 9th – 12th grade at a private or public high school in Georgia, or an approved GA home study program.
- Students must meet the enrollment requirements of Gwinnett Technical College – ALL documents must be submitted by deadlines EVERY semester.
- Students provide SAT, ACT, or ACCUPLACER scores. GTC does not have a GPA requirement but students must meet the test score requirements.
- Undocumented or students that do not have a social security number, can also participate in the Dual Enrollment Program.





ACCUPLACER

ACCUPLACER Testing is
free to all students that
apply for Dual Enrollment
at GTC.

(Reading, Sentence Skills, Arithmetic,
Elementary Algebra)

(scores evaluated based on program selected)

How does Dual Enrollment compare to AP?

Advanced Placement

- Classes taught at the high school by high school teacher
- Course content is college level
- **Have to pass AP exam with 3-5 to get college credit**
- Student must pay \$\$\$\$ to take the AP Exam.
- If student earns the score required, they *may* be able to exempt the aligned class in college.

Dual Enrollment Program

- Classes taught at the college by a college professor (some schools allow GTC to teach at the high school)
- Classes taught are college level courses and transfer to the HS transcript as well.
- **Student takes a TUITION FREE college class in order to earn college credit**
- *A multitude of* courses will transfer to other colleges or universities.



Advantages & Disadvantages

"This is AWESOME!"

- Save Time – Jumpstart on college education
- Save Money – TUITION, Application Fee, & BOOK fees have been waived.
- Earn credit at 2 schools for taking just 1 class (H.S. & college)
- Access to college resources – learning support, on site events etc.
- College Experience before leaving home – Potential to earn Associate Degree while in high school
- All students at all academic levels have an opportunity to earn college credit

"This is Challenging"

- Courses are college level and are not "watered down" for high school students
- Students MUST be disciplined!!!!
- Students will be responsible for meeting deadlines, creating his/her schedule, communicating with counselor, GTC advisors, instructors etc.
- Coordinating the high school schedule/calendar and college schedule/calendar

Courses & Programs

Most Dual Enrollment students take transferrable General Studies courses but GTC has a huge array of programs available.

- Computer Programming
- Game Development
- Cyber Security
- Medical Programs
- **AND MUCH, MUCH MORE!**



COURSE RECOMMENDATIONS

- **MOST POPULAR COURSES:** College courses that are transferable after high school graduation – English 1101, Math 1111 (must complete Geometry, Algebra 1 & II 1st), Biology 1111, Economics 1101, Political Science 1101 etc.
- **Technical Courses-** Computer Sciences (*Programming, Cyber Security, Game Development, Networking, Website Design*), Health/Life Sciences (*Dental Assisting, Health Information Tech., Radiology Tech., Vet Tech.*), Criminal Justice, Early Childhood Education and MUCH more.

3 EASY STEPS To Apply

1. APPLY to Gwinnett Technical College

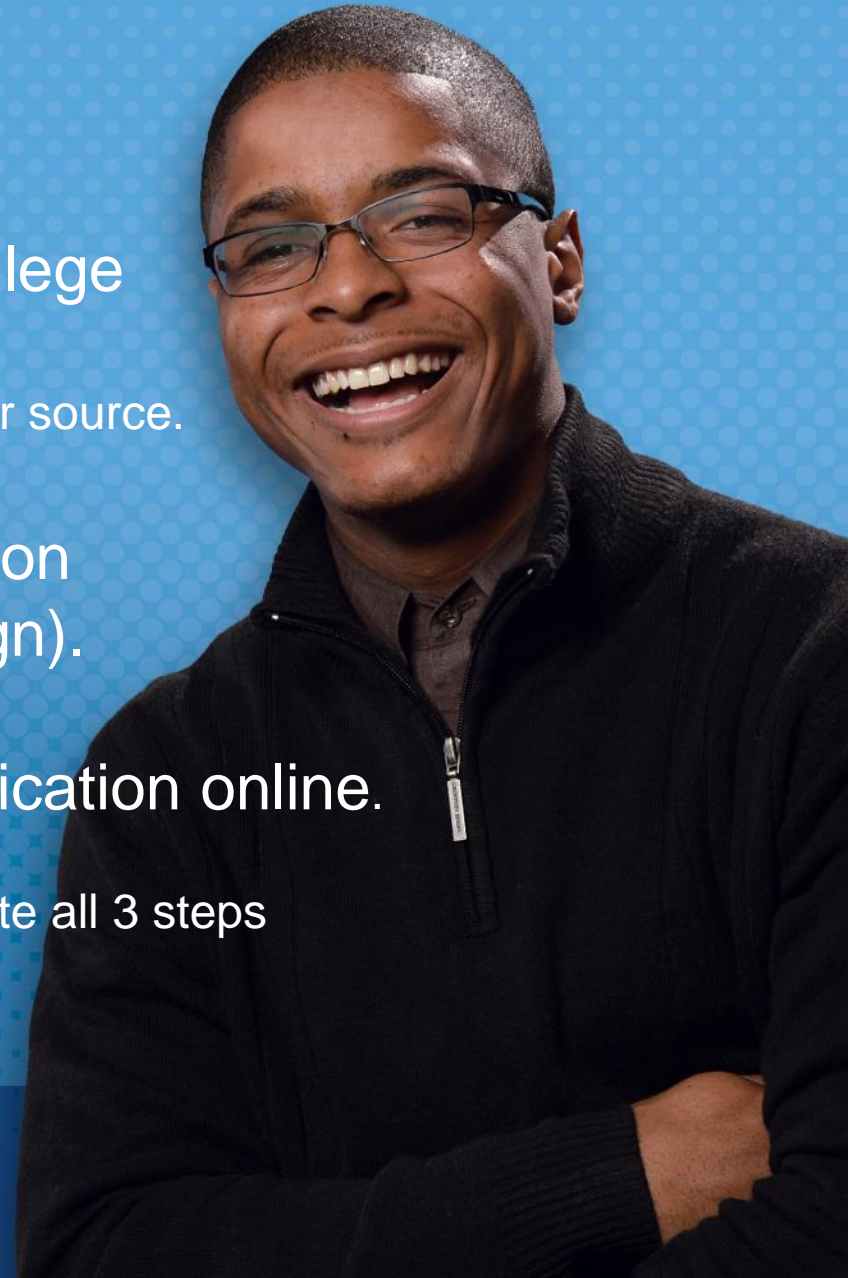
www.GwinnettTech.edu

You **cannot** apply to our college from any other source.

2. Complete the Student Participation Agreement (counselor must sign).

3. Complete the gafutures.org application online.

*** Dual Enrollment students must complete all 3 steps
each semester



DUAL ENROLLMENT

@ GWINNETT TECHNICAL COLLEGE

1 Contact your high school counselor

- For program approval and high school graduation requirements

2 Admissions Application

Must be completed every semester.*

- Visit our website at GwinnettTech.edu/DualEnrollment
- Click "Apply" on the left
- Click "Apply online"
- Log in to create an account then complete and submit the application

(For additional assistance, refer to the "Admissions Application Instructions" on our website under "Documents")

3 Complete your Gwinnett Tech student file

Scan documents to DEadmissions@GwinnettTech.edu or eFax to 678-226-7376.

- Submit your Student Participation Agreement (SPA). ***Must be completed every semester.*** This document can be found at GwinnettTech.edu/DualEnrollment
- Submit a copy of Part 1 of the Dual Enrollment funding application through your www.GaFutures.org account (you can print a copy or send a screenshot showing "pending HS approval"). If you are a home-study student or you do not have a social security number, submit a Dual Enrollment paper funding application. ***Must be completed every semester.*** This document can be found in the HOPE and State Aid section, State Scholarship and Grants.
- Submit official eligible Accuplacer, SAT or ACT test scores. See reverse side for test score requirements.
- Students will be accepted to Gwinnett Tech after all documents have been processed.** See reverse side for instructions on how to check your admissions status.

4 Additional Information

- Home School Students:
 - Submit current Declaration of Intent (DOI) annually
 - Submit Home Study Participation Agreement to GA Student Finance (GSFC) Commission annually
- Federal Education Rights and Privacy Act (FERPA):
 - Contact the Dual Enrollment office to complete a release form allowing parent/guardian access to your college accounts (not mandatory)
- Special Accommodations:
 - Contact the Disability Services Office for approval at DisabilityServices@GwinnettTech.edu
- Students must meet Standards of Academic Program (SAP) to receive Dual Enrollment funding. Students must maintain a 2.0 cumulative GPA or complete at least 67% of registered coursework.



GWINNETT TECHNICAL COLLEGE

Dual Enrollment Quick Links

Website:
GwinnettTech.edu/DualEnrollment

General Questions:
DualEnrollment@GwinnettTech.edu

Document Submission
DEadmissions@GwinnettTech.edu or
E-Fax 678-226-7376

DUAL ENROLLMENT

@ GWINNETT TECHNICAL COLLEGE



SCAN FOR MORE INFO

FREQUENTLY ASKED QUESTIONS

Accuplacer

- 1. What is Accuplacer?**
It is a college entrance exam to determine readiness.
- 2. When can the test be taken?**
Students may take Accuplacer after they have submitted an application to Gwinnett Tech.
- 3. What scores are required for admissions?**

Program Level	Accuplacer	SAT (old)	SAT (new)	ACT	COMPASS
Degree	Reading 64	Verbal 480	Reading 25	English 20	Reading 79
	Writing 70	Math 440	Writing 26	Math 19	Writing 62
	Math 57		Math 24	Reading 17	Math 37
Diploma/Certificate	Reading 55	Verbal 430	Reading 24	English 17	Reading 70
	Writing 60	Math 400	Writing 25	Math 17	Writing 38
	Math 34		Math 22	Reading 15	Math 37

- 4. Do students need an appointment?**
No appointment is required. Students need to arrive during the sign-in hours with a photo ID. Calendars can be found at gwinnettttech.edu/programs/assessment-testing-center/compass-exams/

Funding

- 1. Who pays for Dual Enrollment?**
The program is funded through state appropriations. You HOPE funds are not impacted.
- 2. What does Dual Enrollment cover?**
Dual Enrollment covers tuition, mandatory institutional fees and textbooks.
- 3. What fees are students responsible for?**
Late fees and program-specific fees (lab fees, supply fees).

Courses/Programs of Study

- 1. What courses are approved for Dual Enrollment?**
A list of approved Dual Enrollment courses can be found at GaFutures.org. Select HOPE and State Aid programs, scholarships and grants.

- 2. Where do classes occur?**
Classes occur on campus, online, or both (hybrid).
- 3. How many classes may a student take each semester?**
Students may take up to 15 credit hours per semester.
- 4. What program of study/major should a student select?**
 - Students interested in taking only General Education Courses (English, Math, History, etc.) will select "General Studies"
 - Students interested in taking elective program classes (Business, Welding, etc) will select the program of study in that area.

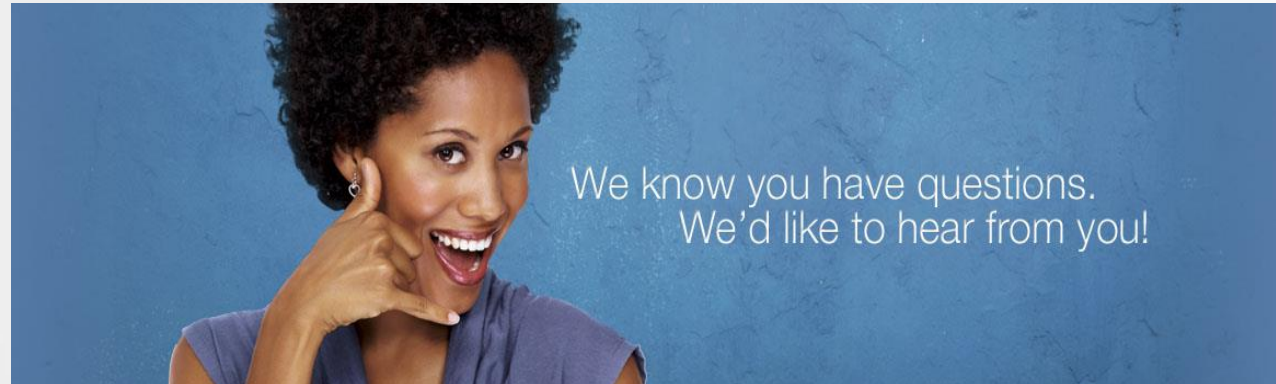
Additional Information

- 1. How do I check my admissions status?**
Go to www.gtc-web.org and select "Apply for admission/check admission status."
 - Enter your Login ID (Social Security # or 900#) and PIN (birth date as MMDDYY or already set PIN.)
 - Click appropriate term (example: Term Year) under "Processed Applications"
 - Look at "Application Status".

If the field on the right reads "Pending," your file is incomplete. Scroll down to view the Required Items missing from your file.

- 2. How do I register for classes?**
Accepted students can register online through their gtc-web.org student account.
- 3. How do I secure textbooks?**
Registered students complete and submit a textbook agreement form to the campus bookstore. Books must be returned at the end of each semester or the student is charged a fee.
- 4. Will my classes transfer?**
Yes. Gwinnett Tech offers 27 core classes that are guaranteed to transfer within the University System of Georgia. It is the student's responsibility to contact admissions representatives at any college or university they are interested in attending to learn more about individual transfer policies.

Questions



DEadmissions@GwinnettTech.edu

Dual Enrollment Lawrenceville (Main Campus) 678-226-6889

Dual Enrollment Alpharetta-North Fulton

470-282-5454

Or visit www.GwinnettTech.edu



Georgia State University Perimeter College Dual Enrollment

Application Requirements

Students must meet all three requirements for admission. Students not meeting one or more of the requirements will not be admissible for participation in the program.

1. GPA Requirement: 3.0 as calculated by the university

2. High School Transcript • Must be official

3. Test scores:

Students may take either the ACT or SAT. The following minimum scores are required:

- ACT Requirement: 20 English and 21 Math
- New SAT Requirement: 26 Reading Section and 26.5 Math Section



Admissions Process

Application and required documents must be submitted by the appropriate deadline.

Fall Semester: **May 1**

Spring Semester: **November 1**

Summer Semester: **May 1**

Students apply online at Perimeter.gsu.edu

Students must submit test scores electronically

Submit ACT scores through ACT (Perimeter College code: 0806)

Submit SAT scores through College Board (Perimeter College code: 5711)

Submit AP scores through College Board (Perimeter College code: 5711)

Students must submit official high school and college transcripts (if applicable)



Math Placement

All GSU students enter at the Math 1001 Quantitative Reasoning

Placement into Math 1111 College Algebra requires:

- SAT Math score of 650
- ACT Math score of 29 or higher
- Accuplacer Math placement test
- AP Credit

Placement into Math 1113 Pre-Calculus or Math 2211 Calculus requires:

- Accuplacer Math placement test
- AP Credit

The first Accuplacer Math test is free. Retest are \$20.00.

Testing Centers are located on all 5 GSU Perimeter College campuses.



CENTENNIAL TIMELINE FOR GROUP PROGRESSION THROUGH THE APPLICATION PROCESS

Sign up for important updates from Miss Ekpo.

Get information for Centennial High School right on your phone—not on handouts.

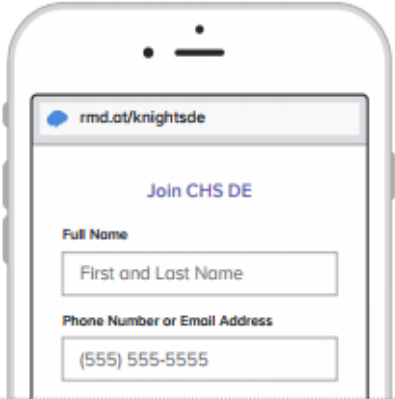
Pick a way to receive messages for CHS DE:

A If you have a smartphone, get push notifications.

On your iPhone or Android phone, open your web browser and go to the following link:

rmd.at/knightsde

Follow the instructions to sign up for Remind. You'll be prompted to download the mobile app.

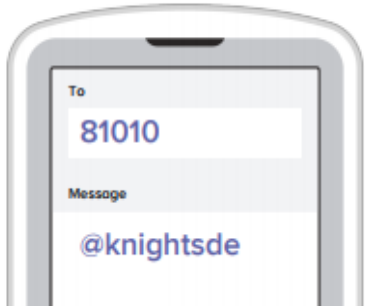


B If you don't have a smartphone, get text notifications.

Text the message @knightsde to the number 81010.

If you're having trouble with 81010, try texting @knightsde to (410) 394-9984.

* Standard text message rates apply.



FEBRUARY 9, 2018: SUBMIT SPA FORMS & FULTON CONTRACTS TO MS. EKPO (**FORMS WILL BE ONLINE & IN THE COUNSELING OFFICE**)

FEBRUARY 12 -23, 2018: APPLICATION SESSION FOR GTC & GSU
GSU-INTERESTED STUDENTS MUST HAVE AN SAT/ACT ON RECORD BY THIS DATE

MARCH 5-9, 2018: ACCUPLACER & FUNDING SESSION FOR GTC STUDENTS @ CHS

MARCH 26-30, 2018: ACCUPLACER & FUNDING MAKE-UP SESSION FOR GTC STUDENTS @ GWINNETT TECHNICAL COLLEGE-ALPHARETTA CAMPUS

DATES MAY CHANGE; THEREFORE, SIGN-UP TO RECEIVE UPDATES THROUGH REMIND



UPCOMING SAT/ACT TEST DATES

NEXT SAT:

DECEMBER 2, 2017

REGISTER BY: **NOVEMBER 21, 2017**



REGISTRATION SITE:
SAT.ORG

SAT	ACT
AUG 26 2017	SEPT 9 2017
OCT 7 2017	OCT 28 2017
NOV 4 2017	DEC 9 2017
DEC 2 2017	FEB 10 2018
MAR 10 2018	APR 14 2018
MAY 5 2018	JUN 9 2018

NEXT ACT:

DECEMBER 9, 2017

REGISTER BY: **NOVEMBER 17, 2017**



REGISTRATION SITE:
ACT.ORG



QUESTION	ANSWER
If my student earns college credit through Dual Enrollment, are they then considered a transfer student when applying to college?	No; students who take college courses in high school are still considered traditional freshman applicants. They should <u>not</u> complete the college transfer application.
Will COLLEGE ENGLISH be offered on the Centennial High School campus?	Yes; students may request to take College English on the Centennial High School campus. GSU-Perimeter instructors will teach the course from the CHS campus.
Are the academic calendars for Fulton County Schools and the Dual Enrollment institution the same?	No; students must abide by the academic calendar of their Dual Enrollment institution.
Will there be bus transportation to/from Gwinnett Technical College?	Bus transportation for the 2018-2019 school year is not guaranteed; thus, all students/parents should plan to secure independent transportation to/from their Dual Enrollment institution of choice.
What type student is most successful?	Students should be remarkably self-motivated, responsible and studious.

CENTENNIAL HIGH SCHOOL

Dual Enrollment Coordinator: Ms. Ekpo

470-254-4181

EkpoN@fultonschools.org

GWINNETT TECHNICAL COLLEGE:

Dual Enrollment Alpharetta-North Fulton

470-282-5454

www.GwinnettTech.edu

GSU-PERIMETER COLLEGE:

ALPHARETTA: 678-240-6030

CLARKSTON/DECATUR: 678-891-2770

DUNWOODY: 770-274-5375

NEWTON: 770-278-1270

<http://perimeter.gsu.edu/admissions/dual-enrollment/>

Contact us

